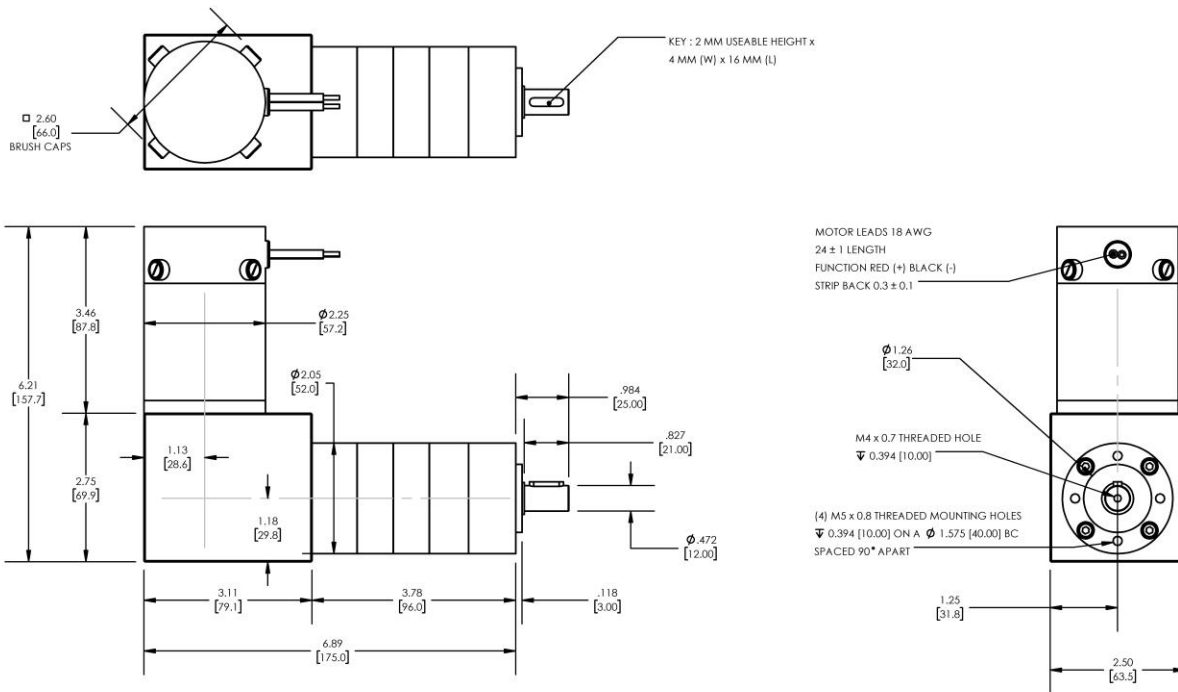


Model Number:

MMP S22-346H-36V GRA52-408



PLANETARY GEARMOTOR OUTPUT PARAMETERS:	VALUE	UNITS	TOLERANCE
Gearhead Ratio (exact)	407.89 : 1		
Gearhead Shaft Output Speed (at full-load)	11	RPM	MAX
Gearmotor Rated Continuous Torque	443	In-Lbs	MAX
Gearmotor Rated Peak Torque	443++	In-Lbs	----
Gearhead Standard Backlash	51	Arc Minutes	MAX
Gearhead Efficiency	65%	----	----
Output Shaft Radial Load Capacity	113	Lbs	MAX
Output Shaft Axial Load Capacity	45	Lbs	MAX
Gearmotor Total Weight	6.5	Lbs	MAX

++ All Peak Torque values are dependent upon duty. Contact our sales office for details.

DC MOTOR PERFORMANCE PARAMETERS:	VALUE	UNITS	TOLERANCE
Rated DC Voltage	36	DC VOLTS	----
Rated Continuous Current	3.7	AMPERES	----
No-Load Speed	5000	RPM	MAX
Rated Speed	4435	RPM	+/- 15%
Rated Continuous Power Out	88	WATTS	+/- 15%
Rated Continuous Torque	27	OZ-IN	----
Peak Torque (motor only)	210	OZ-IN	----
No-Load Current	0.88	AMPERES	MAX
Back EMF Constant (Ke)	7.2	V/KRPM	+/- 10%
Torque Constant (Kt)	9.7	OZ-IN/AMP	+/- 10%
DC Armature Resistance	1.11	OHMS	+/- 15%
Armature Inductance	0.44	mH	+/- 15%
Armature temperature	155	DEG. C	MAX

NOTES:

- ENCODER & BRAKE OPTIONS AVAILABLE – [FOLLOW THIS LINK FOR DETAILS](#)
- NEMA MOUNTING FLANGE OPTION AVAILABLE – [FOLLOW THIS LINK FOR DETAILS](#)

MIDWEST MOTION PRODUCTS, INC

DESIGN, MANUFACTURING & DISTRIBUTION - MOTION CONTROL EQUIPMENT

www.midwestmotion.com

email: sales@midwestmotion.com